

# 44th Annual Conference of the Society of Southeast Social Psychologists

## Event Schedule

Sat, Oct 23, 2021

8:30am

### Welcome Session

🕒 8:30am - 8:45am, Oct 23

Join us for a quick welcome session to kickstart your day and get oriented to the platform before our day of programming officially gets started!

---

#### 🗣️ Speakers



**Chris Martin** Visiting Assistant Professor, Psychology and Core Studies, Oglethorpe University



**Katrina Jongman-Sereno** Assistant Professor, Elon University

9:00am

### Data Byte Session 1

🕒 9:00am - 9:50am, Oct 23

#### Data Bytes

Included Presentations:

1. Conflicting Political Party and Candidate Preference Predicts Reasons for Avoiding Political Information
2. Examining the influence of past self-gratitude on self-perceptions
3. Early Birds DO Catch the Worm: Reputational Costs of Evening Chronotypes
4. The varieties of redemption: Summarizing findings on a novel conceptualization of redemptive forms
5. Attachment Style and Preference for Relationship Nostalgia

---

#### 🗣️ Speakers



**Samantha Zaw** University of Florida



**Nicole Iannone** Radford University



**Joshua Perlin** Graduate Student, University of Florida



**Julie Swets** PhD Student, Texas Christian University



**Liz Kerner** Univ. of Florida

## Data Byte Session 2

🕒 9:00am - 9:50am, Oct 23

### Data Bytes

Included Presentations:

1. Demonstrate Values: Moral Outrage Connotes Long-Term Mating Potential
2. Group Membership Affects Valence Categorizations of Unambiguous Facial Emotions
3. Relational Mobility Predicts a Faster Spread of COVID-19
4. Solidarity or Hostility: The Influence of Zero-Sum Beliefs on the Relationship between Black and Asian Americans

---

### 🗣️ Speakers



**Mitch Brown** University of Arkansas



**Jonathan Ojeda** Graduate Student, University of North Carolina at Greensboro



**Cristina Salvador** Assistant Research Professor, Duke University



**Tuong-Vy Nguyen** Graduate Student, University of Mississippi

10:00am

## Symposia Session 1: Politics and Political Philosophy

🕒 10:00am - 10:45am, Oct 23

### Individual Talks

Included Presentations:

1. Weather experiences reduce political ideology's effect on climate policy support
2. Mistrust of Political Leaders on Collective Action
3. Toward a theory of freedom: A bottom-up approach to its dimensionality and composition

---

### 🗣️ Speakers



**Abhay Alaukik** University of Florida



**Heather Barnes Truelove** Associate Professor, University of North Florida



**Adam Beam** University of Mississippi

## Symposium Session 2: Meaning and Wellbeing

🕒 10:00am - 10:45am, Oct 23

### Individual Talks

Included Presentations:

1. You Say That's How You Feel: Skepticism and naïve realism interfere with judgments of meaning
2. The Good Life in Cultural Context: Examining Asian Young Adults' Psychological Well-Being and Narratives of Negative Events
3. Dawdling at night: Negative affect and arousal predict bedtime procrastination

### 🗣️ Speakers



**Elisha LePine** PhD Student, University of Florida



**Yeonju Suh** Duke University



**Yijun Lin** Graduate student, University of Florida

## 11:00am

### Poster Session 1

🕒 11:00am - 11:45am, Oct 23

### Posters

Included posters:

The role of emotional experience of masturbation in structuring female sexuality

The Relationship Between Connection to Nature, Self-Compassion, and Positive Body Image Among Women

How Conflict and Gratitude Relate to Relationship Satisfaction During the COVID-19 Pandemic

Tinder Use Was Associated with Less Relationship Satisfaction and More Game Playing

Narrative Analysis of Self-Criticism and Affect in the Cultural Experiences and Memory of Asian University Students

The Power of Self-Control Using Benefactor Self-Control to Predict Momentary Gratitude

Effects of Peer-Elicited Jealousy on Relational Aggression in Men: The Roles of Contingent and Threatened Masculinity

Smown: Does smiling and frowning at the same time elicit mixed emotions?

Medical Mistrust and Misinformation: Community Decisions on COVID-19 Vaccination

Does Identity Fusion Moderate the Motivational Primacy of the Individual Self?

The Perceived Effects of the COVID-19 Pandemic on Eating, Exercise, Anxiety, and Body Satisfaction

---

### 11 Subsessions

- **The role of emotional experience of masturbation in structuring female sexuality**  
🕒 11:00am - 11:45am, Oct 23
- **The Relationship Between Connection to Nature, Self-Compassion, and Positive Body Image Among Women**  
🕒 11:00am - 11:45am, Oct 23
- **How Conflict and Gratitude Relate to Relationship Satisfaction During the COVID-19 Pandemic**  
🕒 11:00am - 11:45am, Oct 23
- **Tinder Use Was Associated with Less Relationship Satisfaction and More Game Playing**  
🕒 11:00am - 11:45am, Oct 23
- **Narrative Analysis of Self-Criticism and Affect in the Cultural Experiences and Memory of Asian University Students**  
🕒 11:00am - 11:45am, Oct 23
- **The Power of Self-Control Using Benefactor Self-Control to Predict Momentary Gratitude**  
🕒 11:00am - 11:45am, Oct 23
- **Effects of Peer-Elicited Jealousy on Relational Aggression in Men: The Roles of Contingent and Threatened Masculinity**  
🕒 11:00am - 11:45am, Oct 23
- **Smown: Does smiling and frowning at the same time elicit mixed emotions?**  
🕒 11:00am - 11:45am, Oct 23
- **Medical Mistrust and Misinformation: Community Decisions on COVID-19 Vaccination**  
🕒 11:00am - 11:45am, Oct 23
- **Does Identity Fusion Moderate the Motivational Primacy of the Individual Self?**  
🕒 11:00am - 11:45am, Oct 23
- **The Perceived Effects of the COVID-19 Pandemic on Eating, Exercise, Anxiety, and Body Satisfaction**  
🕒 11:00am - 11:45am, Oct 23

### Poster Session 2

🕒 11:00am - 11:45am, Oct 23

#### Posters

Included posters:

Relationship-Centered Nostalgia Offsets Conflict to Boost Partner Commitment

Race-based health disparities in Covid

Concussions, Neck injuries, and return to play timelines: Differences emerge under differing coaching staffs

Empathic Forecasts of the Big Fish Little Pond Effect

The Effects of Explicit and Implicit Racial Bias on Evaluations of Individuals Involved with the Criminal Justice System

Growing up in difficult circumstances predicts spontaneous expressions of Gratitude to God across diverse samples

Ghost Goals: Making Sense of Shared and Unshared Goals in Transactive Goal Systems

And The Oscar Goes To . . . : The Relationship between Celebrity Desire and Well-Being

Race Logic: Stereotyped Mental Representations of Football Players

Predicting Attitudes Toward COVID-19 Mask and Vaccine Mandates

If Not This Woman, What Woman?

---

### 11 Subsessions

- **Relationship-Centered Nostalgia Offsets Conflict to Boost Partner Commitment**  
🕒 11:00am - 11:45am, Oct 23
- **Race-based health disparities in Covid**  
🕒 11:00am - 11:45am, Oct 23
- **Concussions, Neck injuries, and return to play timelines: Differences emerge under differing coaching staffs**  
🕒 11:00am - 11:45am, Oct 23
- **Empathic Forecasts of the Big Fish Little Pond Effect**  
🕒 11:00am - 11:45am, Oct 23
- **The Effects of Explicit and Implicit Racial Bias on Evaluations of Individuals Involved with the Criminal Justice System**  
🕒 11:00am - 11:45am, Oct 23
- **Growing up in difficult circumstances predicts spontaneous expressions of Gratitude to God across diverse samples**  
🕒 11:00am - 11:45am, Oct 23
- **Ghost Goals: Making Sense of Shared and Unshared Goals in Transactive Goal Systems**  
🕒 11:00am - 11:45am, Oct 23
- **And The Oscar Goes To . . . : The Relationship between Celebrity Desire and Well-Being**  
🕒 11:00am - 11:45am, Oct 23
- **Race Logic: Stereotyped Mental Representations of Football Players**  
🕒 11:00am - 11:45am, Oct 23
- **Predicting Attitudes Toward COVID-19 Mask and Vaccine Mandates**  
🕒 11:00am - 11:45am, Oct 23
- **If Not This Woman, What Woman?**  
🕒 11:00am - 11:45am, Oct 23

### 11:45am

**Business Meeting**  
🕒 11:45am - 12:15pm, Oct 23

### 12:30pm

---

### Poster Session 3

🕒 12:30pm - 1:15pm, Oct 23

#### Posters

Included Posters:

Work and Leisure Experiences During the COVID-19 Outbreak

When Disasters are Exciting: Fun vs Scary Perceptions of the Covid-19 Pandemic

Do Perceived Social Norms Predict the Sleep Behaviors of College Students?

Perceived Partner Commitment Predicts Greater Selfishness Among Disagreeable Partners

Examining the Relation Between Disparities in High School Completion Rates and Implicit Bias Among Black and White Residents of the U.S.

How Openness to Experience, Agreeableness, The Authoritarianism-Conservatism-Traditionalism Model, Social Dominance Orientation Correlate with Anti-Immigrant Attitudes and Policy Support

Measuring Men's Sexual Frustration

A Personality Model of White Fragility

How Preferences for Disney Princesses is Related to Sexism and Implicit Relationship Beliefs

What Makes You Stronger: Further Clarifying the Relationship between Cumulative Lifetime and Well-Being

The Impact of Media Representations Of Older Adults on the Endorsement of Aging Stereotypes

---

#### 11 Subsessions

- **Work and Leisure Experiences During the COVID-19 Outbreak**

🕒 12:30pm - 1:15pm, Oct 23

- **When Disasters are Exciting: Fun vs Scary Perceptions of the Covid-19 Pandemic**

🕒 12:30pm - 1:15pm, Oct 23

- **Do Perceived Social Norms Predict the Sleep Behaviors of College Students?**

🕒 12:30pm - 1:15pm, Oct 23

- **Perceived Partner Commitment Predicts Greater Selfishness Among Disagreeable Partners**

🕒 12:30pm - 1:15pm, Oct 23

- **Examining the Relation Between Disparities in High School Completion Rates and Implicit Bias Among Black and White Residents of the U.S.**

🕒 12:30pm - 1:15pm, Oct 23

- **How Openness to Experience, Agreeableness, The Authoritarianism-Conservatism-Traditionalism Model, Social Dominance Orientation Correlate with Anti-Immigrant Attitudes and Policy Support**

🕒 12:30pm - 1:15pm, Oct 23

- **Measuring Men's Sexual Frustration**

🕒 12:30pm - 1:15pm, Oct 23

- **A Personality Model of White Fragility**

🕒 12:30pm - 1:15pm, Oct 23

- **How Preferences for Disney Princesses is Related to Sexism and Implicit Relationship Beliefs**

🕒 12:30pm - 1:15pm, Oct 23

- **What Makes You Stronger: Further Clarifying the Relationship between Cumulative Lifetime Adversity and Well-Being**

🕒 12:30pm - 1:15pm, Oct 23

- **The Impact of Media Representations Of Older Adults on the Endorsement of Aging Stereotypes**

🕒 12:30pm - 1:15pm, Oct 23

#### Poster Session 4

🕒 12:30pm - 1:15pm, Oct 23

##### Posters

Included Posters:

Sexuality attitudes do not predict warmth toward gay male characters: An exploration of the Ozark series

Perceptions of parental sacrifice in the college experience: The role of gratitude and indebtedness on motivation and academic behavioral outcomes

Social Comparison on Instagram: An Investigation of Upward Assimilative and Upward Contrastive Emotions

Judgments of Victims and the Severity of Victims' Past Transgressions

Place Authenticity: How the Individual and World Interact

Latinx Voting Behavior in the 2020 Presidential Election

Perceived fairness of pricing for electric vehicle charging speeds: The effects of resource need and empathy

Self-Referential Pronouns and Individual Differences: A Critical Review of Correlations and Interventions

Moral Foundations of COVID-19 Attitudes and Compliance Behavior

Grooming in Retrospect: The Effects of Hindsight Bias on the Detection of Grooming Behaviors in Cases of Same-Sex Versus Opposite-Sex Child Sexual Abuse

Masking deception: The impact of face masks on deception detection

---

#### 11 Subsessions

- **Sexuality attitudes do not predict warmth toward gay male characters: An exploration of the Ozark series**

🕒 12:30pm - 1:15pm, Oct 23

- **Perceptions of parental sacrifice in the college experience: The role of gratitude and indebtedness on motivation and academic behavioral outcomes**

🕒 12:30pm - 1:15pm, Oct 23

- **Social Comparison on Instagram: An Investigation of Upward Assimilative and Upward Contrastive Emotions**

🕒 12:30pm - 1:15pm, Oct 23

- **Judgments of Victims and the Severity of Victims' Past Transgressions**

🕒 12:30pm - 1:15pm, Oct 23

- **Place Authenticity: How the Individual and World Interact**

🕒 12:30pm - 1:15pm, Oct 23

- **Latinx Voting Behavior in the 2020 Presidential Election**

🕒 12:30pm - 1:15pm, Oct 23

- **Perceived fairness of pricing for electric vehicle charging speeds: The effects of resource need and empathy**

🕒 12:30pm - 1:15pm, Oct 23

- **Self-Referential Pronouns and Individual Differences: A Critical Review of Correlations and Interventions**

🕒 12:30pm - 1:15pm, Oct 23

- **Moral Foundations of COVID-19 Attitudes and Compliance Behavior**

🕒 12:30pm - 1:15pm, Oct 23

- **Grooming in Retrospect: The Effects of Hindsight Bias on the Detection of Grooming Behaviors in Cases of Same-Sex Versus Opposite-Sex Child Sexual Abuse**

🕒 12:30pm - 1:15pm, Oct 23

- **Masking deception: The impact of face masks on deception detection**

🕒 12:30pm - 1:15pm, Oct 23

## Poster Session 5

🕒 12:30pm - 1:15pm, Oct 23

### Posters

Included Posters:

Who engages in which forms of consensual non-monogamy and what are the outcomes?

Ostracism and Openness to Firearm Ownership

Existential Isolation, I-Sharing, and Violent Rhetoric Among Incels

Reducing Stigma Towards Therapy Through Video Clips or Thinking of Someone – Which is More Effective?

Quieting the Mind: Mindfulness training induced resting state functional connectivity changes

Negative reproductive views as a worldview threat?: The effect of social threats on perceptions of anti-natalists

A Method for Estimating the Time of Initiating Correct Categorization in Mouse-Tracking

The Role Women Play in the 21st Century Home and Gender Equality: A Literature Review

Hey! That's Our Best Friend!: Benefits of Sharing Parasocial Relationships with a Friend

American Black and White Individuals' Reactions to Partner Content Strategies in Intra- and Inter-racial Interactions

Emotion Regulation in Response to Negative Events

---

## 11 Subsessions

- **Who engages in which forms of consensual non-monogamy and what are the outcomes?**

🕒 12:30pm - 1:15pm, Oct 23

- **Ostracism and Openness to Firearm Ownership**

🕒 12:30pm - 1:15pm, Oct 23

- **Existential Isolation, I-Sharing, and Violent Rhetoric Among Incels**

🕒 12:30pm - 1:15pm, Oct 23

- **Reducing Stigma Towards Therapy Through Video Clips or Thinking of Someone – Which is More Effective?**

🕒 12:30pm - 1:15pm, Oct 23

- **Quieting the Mind: Mindfulness training induced resting state functional connectivity changes**

🕒 12:30pm - 1:15pm, Oct 23

- **Negative reproductive views as a worldview threat?: The effect of social threats on perceptions of anti-natalists**

🕒 12:30pm - 1:15pm, Oct 23

- **A Method for Estimating the Time of Initiating Correct Categorization in Mouse-Tracking**

🕒 12:30pm - 1:15pm, Oct 23



● **The Role Women Play in the 21st Century Home and Gender Equality: A Literature Review**

🕒 12:30pm - 1:15pm, Oct 23

● **Hey! That's Our Best Friend!: Benefits of Sharing Parasocial Relationships with a Friend**

🕒 12:30pm - 1:15pm, Oct 23

● **American Black and White Individuals' Reactions to Partner Content Strategies in Intra- and Inter-racial Interactions**

🕒 12:30pm - 1:15pm, Oct 23

● **Emotion Regulation in Response to Negative Events**

🕒 12:30pm - 1:15pm, Oct 23

## 1:30pm

### Data Byte Session 3

🕒 1:30pm - 2:15pm, Oct 23

#### Data Bytes

Included Presentations:

1. The Relation between Light-Dark Metaphors and Colorism
2. Racial Bias in the Pain Perception and Treatment of Black Female Patients Among Nursing Students
3. Is Fat Identity a Buffer Against Weight Discrimination? Examining the Rejection-Identification Model
4. Threat and the Anchoring and Adjustment Heuristic
5. "I don't sympathize with you": The dehumanization and harassment of sexualized women on social media

---

#### 🗣️ Speakers



**Kasheena Rogbeer** Lab Manager, University of Georgia



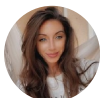
**Raegan Bishop** Graduate Assistant, University of Southern Mississippi



**Ashley Araiza** Angelo State University



**Mattie Hedgebeth** Graduate Student, Virginia Commonwealth Univ.



**Kaitlyn Ligman** Graduate Student, University of South Florida

### Data Byte Session 4

🕒 1:30pm - 2:15pm, Oct 23

#### Data Bytes

Included Presentations:

1. Increasing Support for Transgender People through Inclusive Pronoun Usage
  2. Implicit and Explicit Dehumanization of Suicide Attempt Survivors by Current and Aspiring Mental Health Service Providers
  3. The Stigma of Academic Probation: Desiring distance and perceiving lower prosociality
  4. Civilians' Implicit Threat Evaluation of Police Officers Underlies Explicit Perception of Police
- 

🗣️ Speakers



**Austin Blanton** Undergraduate, Auburn University



**Spencer Chen** Simon Fraser University



**Joey Curran** Wake Forest University



**Vincenzo Olivett** Florida State University

**Data Byte Session 5**

🕒 1:30pm - 2:20pm, Oct 23

**Data Bytes**

Included Presentations:

1. Exposure to Peers' Online Postings about Substances and Adolescents' Substance Use: A Longitudinal Analysis
  2. Effect of Online Self-Disclosure Valence on Social Attractiveness and Facebook Reactions
  3. No Mo' FOMO: Virtual Social Events and Need Satisfaction
  4. Validation of The Dark Personality Inventory: A Very Brief Measure
  5. Perception and Evaluation of Antisocial Behaviors
- 

🗣️ Speakers



**Kaitlyn Burnell** Postdoctoral Associate, Duke University



**Helen Zhang** Davidson College



**Jacob Eirich** Radford University



**Lauren Jordan** Graduate Student, Univ. of Mississippi



**Hannah Thornton** East Carolina University

2:30pm

### Symposium Session 3: Race Relations and Racism

🕒 2:30pm - 3:30pm, Oct 23

**Individual Talks**

Included Presentations:

1. Political Orientation Moderates Dangerous vs. Negative Associations with Black vs. White
2. The Face of Racism: Mental Representations of Racism Broadly Reflect Negative Traits
3. Seeing Black, Seeing White: Ambiguous Categorization Outcomes for White and Black Children and their Parents
4. A social-belonging intervention improves sense of purpose for college students of color

---

#### 👤 Speakers



**Tara Lesick** Florida State University



**Alyssa Newlon** Graduate Student, University of North Carolina, Greensboro



**Mercedes Munoz** Doctoral Student, Duke University



**Keliang Colin Li** Graduate Researcher , Wake Forest University

3:30pm

### Symposium Session 4 - Special "Keynote" Session

🕒 3:30pm - 4:30pm, Oct 23

**Individual Talks** **Keynote**

Included Sessions:

1. "You should smile more": Gendered Trait Inferences Produce Expectations of Facial Masculinity
2. Adaptive Calibration Of Human Societies: An Evolutionary Perspective On Global Fertility Trends
3. Underestimating Meaning: Focusing more on reasons (and less on feelings) boosts predicted meaning
4. A Temporal-Comparison Approach to Ideological System Justification

## 📣 Speakers



**Hayley Liebenow** Graduate Student, University of North Carolina at Greensboro



**Elena Brandt** Doctoral Student, Florida State University



**Anais Ortiz** Graduate Research Assistant, University of Florida



**Eva Garcia Ferres** University of Florida

## 4:45pm

### **Social Hour: Pets, Plants, and Psychologists**

🕒 4:45pm - 5:45pm, Oct 23

Join us for an informal social hour of breakout rooms each with a different theme for whatever you're interested in!